



1000-3000 High speed Mixer



2020-07

- ◆ High speed mixer: 180kw super efficient permanent magnet synchronous motor, high speed section of blade 650-703rpm, four blades, the maximum mixing capacity of each pot 450kg
- ◆ Cold mixer: 37 KW AC asynchronous motor, pulley drive, blade speed 85rpm

- ◆ **If high speed mixer motor power under the same conditions, it is high output;**
- ◆ **High speed mixer energy saving effects is remarkable;**
- ◆ **Blade adopts special multi-channel spraying process, special design structure, fast heating up, high wear resistance;**
- ◆ **High speed mixer discharge adopts motor current+time dual mode control, discharge control is accurate**
- ◆ **High speed mixer discharge valve adopts double cylinder structure, valve switch is reliable.**
- ◆ **Cold mixer adopts pulley drive, wear-resistant SPB belt, low failure rate**

High mixer adopts high torque synchronization (motor power 180kw) + specially constructed blade+high load bearing group, light calcium content 40 pieces, high mixing temperature set 130 degrees, the output of 3.5 tons/hour, the market similar mixing machine similar formula capacity of about 1.9 tons/hour

High mixing machine adopts super efficient permanent magnet synchronous motor, when produce the electric wire conduit, the unit energy consumption is 30.59 kwh/t. At the present, the unit energy consumption of similar formula of similar mixer on the market is grater than 43 kwh/t, and the maximum energy saving is more than 28%.

mixer paddle surface using multichannel sintering spraying process, the paddle's wear-resisting is long, for the formula with less than 40 pieces of calcium power , the paddle of mixer can be used for more than 3years(light calcium, currently using normal

feature 4: high speed mixer discharging precise control



The motor of high mixer is 180 KW, but the no-load current with paddles is only 6A(Simens 160Kw asynchronous motor no-load current is 92.6A), The discharging procedure control of high mixer adopts the control mode of time+motor current, which not only controls accurately, but also greatly saves the mixing time(the discharging time is only 15 seconds now).

feature 5: Discharge valve of high mixer is reliable

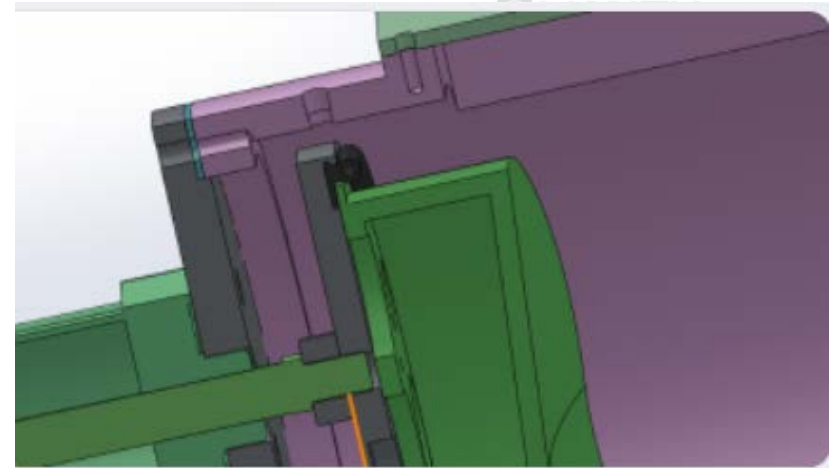
LIANSU

LIANSU

LIANSU

LIANSU

LIANSU



The discharging valve of high mixer adopts double cylinder control, and the discharge valve cast aluminum shaped cavity increases (diameter is 300) to ensure that the discharge time is fast, and each open and close in place.